



torquui™

FITTING IN

WHERE OTHERS DON'T

TX SLIMLINE RATCHET LINK

SLR

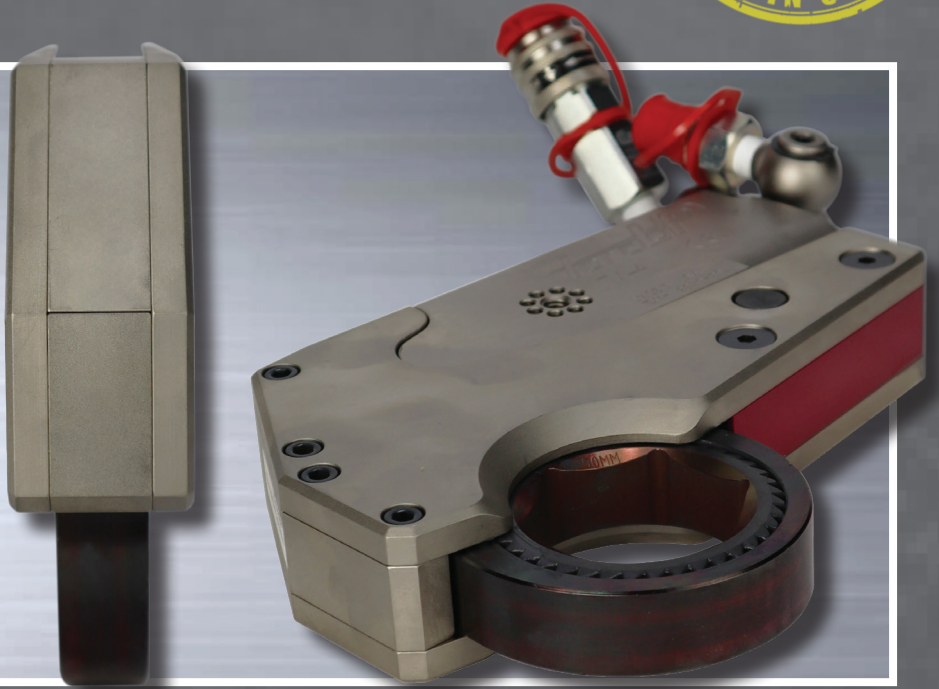
TX SERIES SLIMLINE LINKS FIT INTO THE FUTURE



TECHNICAL DATA SLR

MIN TORQUE (lbf-ft)	425
MAX TORQUE (lbf-ft)	4786
MIN TORQUE (nm)	564
MAX TORQUE (nm)	6584
OUTPUT ACCURACY	+/-3%
REPEATABILITY	100%
DUTY CYCLE	100%
CYLINDER WEIGHT (lbs)	6.0
CYLINDER WEIGHT (kgs)	2.7
LINK WEIGHT FROM (lbs)	5.1
LINK WEIGHT FROM (kgs)	2.3
LINK WEIGHT TO (lbs)	7.1
LINK WEIGHT TO (kgs)	3.2

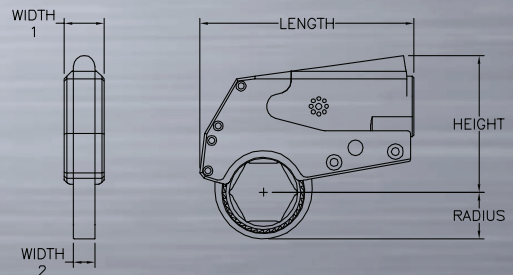
*Reference values only.
Consult calibration torque chart provided with tool.



DIMENSIONAL DATA SLR

POWER ENGINEERED

HEX RANGE (in)	HEX RANGE (mm)	LENGTH (in)	LENGTH (mm)	HEIGHT (in)	HEIGHT (mm)	WIDTH 1 (in)	WIDTH 1 (mm)	WIDTH 2 (in)	WIDTH 2 (mm)	RADIUS (in)	RADIUS (mm)
1-1 5/8	27-41	8.51	216.2	5.57	141.5	1.63	41.4	0.88	22.4	1.43	36.3
1 11/16-1 13/16	42-46	8.51	216.2	5.57	141.5	1.63	41.4	0.88	22.4	1.53	38.9
1 7/8-2	47-50	8.51	216.2	5.57	141.5	1.63	41.4	0.88	22.4	1.67	42.4
2 1/16-2 3/16	51-55	8.60	218.4	5.57	141.5	1.63	41.4	0.88	22.4	1.78	45.2
2 1/4-2 3/8	56-60	8.71	221.2	5.57	141.5	1.63	41.4	0.88	22.4	1.90	48.3
2 7/16-2 9/16	61-65	8.79	223.2	5.57	141.5	1.63	41.4	0.88	22.4	2.00	50.8
2 5/8-2 3/4	66-70	8.82	224.0	6.01	152.7	1.63	41.4	0.88	22.4	2.11	53.6
2 13/16-2 15/16	71-75	8.88	225.6	6.01	152.7	1.63	41.4	0.88	22.4	2.24	56.9
3-3 1/8	76-80	8.96	227.6	6.01	152.7	1.63	41.4	0.88	22.4	2.35	59.7



TOLL FREE: 1-888-TORCUP-1
TELEPHONE: 1-610-250-5800
FAX: 1-610-250-2700
EMAIL: SALES@TORCUP.COM

TorcUP Inc. 1025 Conroy Place Easton, PA. 18040 USA | www.torcup.com

TorcUP products are subject to continual development and TorcUP reserves the right to make changes to the specifications and design of their products without prior notice. All rights are reserved. Reproduction in whole or in part without permission of TorcUP Inc. is prohibited.